

SOP-623



SOP ToolBox

Creating SOPs doesn't have to be a complex task! Begin with Fhysics' SOP Templates, Forms, Checklists, and Agreements.

Easily tailor them to your organisation's needs in a user-friendly PPT format. Select your specific domain, and we'll provide you with the customized templates within a week.

<https://pages.fhysics.net/sop-toolbox>

All content and materials provided in this Standard Operating Procedure by Fhysics Business Consultants Pvt. Ltd. including but not limited to text, images, videos, documents, and software, are protected by copyright laws and are the intellectual property of Fhysics Business Consultants Pvt. Ltd. Unauthorized reproduction, distribution, or use of these materials in any form is strictly prohibited and may result in legal action. Any authorized use of Fhysics Business Consultants Pvt. Ltd' materials must include proper attribution and is subject to the terms and conditions set forth by Fhysics Business Consultants Pvt. Ltd.



Top 50 SOPs for Standard Operating Procedures (SOPs) for Strawberry Farming

SOP-623-001: Standard Operating Procedure for Site Selection in Strawberry Farming

SOP-623-002: Standard Operating Procedure for Soil Preparation in Strawberry Farming

SOP-623-003: Standard Operating Procedure for Planting Strawberry Crowns

SOP-623-004: Standard Operating Procedure for Irrigation Management in Strawberry Farming

SOP-623-005: Standard Operating Procedure for Fertilizer Application in Strawberry Farming

SOP-623-006: Standard Operating Procedure for Weed Control in Strawberry Farming

SOP-623-007: Standard Operating Procedure for Mulching in Strawberry Farming

SOP-623-008: Standard Operating Procedure for Pruning Strawberry Plants

SOP-623-009: Standard Operating Procedure for Disease Prevention and Control in Strawberry Farming

SOP-623-010: Standard Operating Procedure for Pest Management in Strawberry Farming

SOP-623-011: Standard Operating Procedure for Flowering and Pollination in Strawberry Farming

SOP-623-012: Standard Operating Procedure for Harvesting Strawberries

SOP-623-013: Standard Operating Procedure for Handling and Packaging Strawberries

SOP-623-014: Standard Operating Procedure for Post-Harvest Storage of Strawberries

SOP-623-015: Standard Operating Procedure for Quality Control in Strawberry Farming

SOP-623-016: Standard Operating Procedure for Record-Keeping in Strawberry Farming

SOP-623-017: Standard Operating Procedure for Worker Safety in Strawberry Farming

SOP-623-018: Standard Operating Procedure for Equipment Maintenance in Strawberry Farming

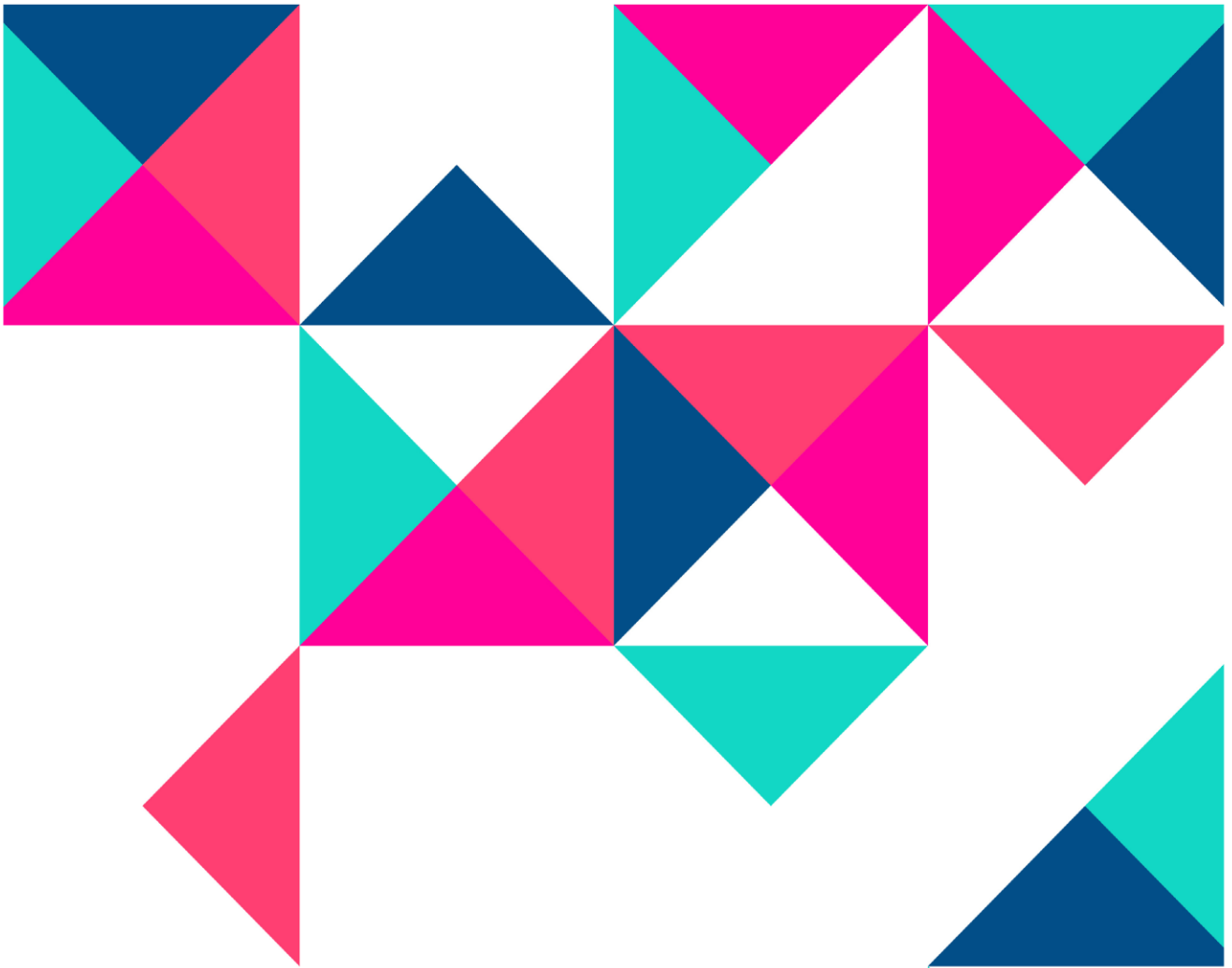
SOP-623-019: Standard Operating Procedure for Irrigation System Maintenance



- SOP-623-020: Standard Operating Procedure for Calibration of Fertilizer Application Equipment
- SOP-623-021: Standard Operating Procedure for Soil Testing in Strawberry Farming
- SOP-623-022: Standard Operating Procedure for Environmental Sustainability Practices
- SOP-623-023: Standard Operating Procedure for Organic Strawberry Farming
- SOP-623-024: Standard Operating Procedure for Integrated Pest Management (IPM)
- SOP-623-025: Standard Operating Procedure for Cold Protection Measures in Strawberry Farming
- SOP-623-026: Standard Operating Procedure for Frost Protection Measures
- SOP-623-027: Standard Operating Procedure for Drip Irrigation Installation
- SOP-623-028: Standard Operating Procedure for Monitoring Weather Conditions
- SOP-623-029: Standard Operating Procedure for Soil Moisture Management
- SOP-623-030: Standard Operating Procedure for Companion Planting in Strawberry Farms
- SOP-623-031: Standard Operating Procedure for Strawberry Runner Propagation
- SOP-623-032: Standard Operating Procedure for Hydroponic Strawberry Farming
- SOP-623-033: Standard Operating Procedure for Netting Installation for Bird Protection
- SOP-623-034: Standard Operating Procedure for Crop Rotation in Strawberry Farming
- SOP-623-035: Standard Operating Procedure for Sunlight Exposure Management
- SOP-623-036: Standard Operating Procedure for Phytosanitary Measures
- SOP-623-037: Standard Operating Procedure for Soil pH Adjustment
- SOP-623-038: Standard Operating Procedure for Irrigation Schedule Optimization
- SOP-623-039: Standard Operating Procedure for Training and Development of Farm Workers
- SOP-623-040: Standard Operating Procedure for Post-Harvest Waste Management
- SOP-623-041: Standard Operating Procedure for Contingency Planning in Strawberry Farming
- SOP-623-042: Standard Operating Procedure for Greenhouse Strawberry Farming
- SOP-623-043: Standard Operating Procedure for Row Cover Installation
- SOP-623-044: Standard Operating Procedure for Sustainable Water Management
- SOP-623-045: Standard Operating Procedure for Fruit Quality Assessment
- SOP-623-046: Standard Operating Procedure for Crop Monitoring and Surveillance



SOP-623-047: Standard Operating Procedure for Chemical Residue Testing
SOP-623-048: Standard Operating Procedure for Record Auditing in Strawberry Farming
SOP-623-049: Standard Operating Procedure for Export Quality Compliance
SOP-623-050: Standard Operating Procedure for Farm Closure and Rehabilitation



SOP ToolBox

Creating SOPs doesn't have to be a complex task! Begin with Fhysics' SOP Templates, Forms, Checklists, and Agreements. Easily tailor them to your organisation's needs in a user-friendly PPT format. Select your specific domain, and we'll provide you with the customized templates within a week.

<https://pages.fhysics.net/sop-toolbox>



Fhysics Business Consultants Pvt. Ltd.
www.Fhysics.net

